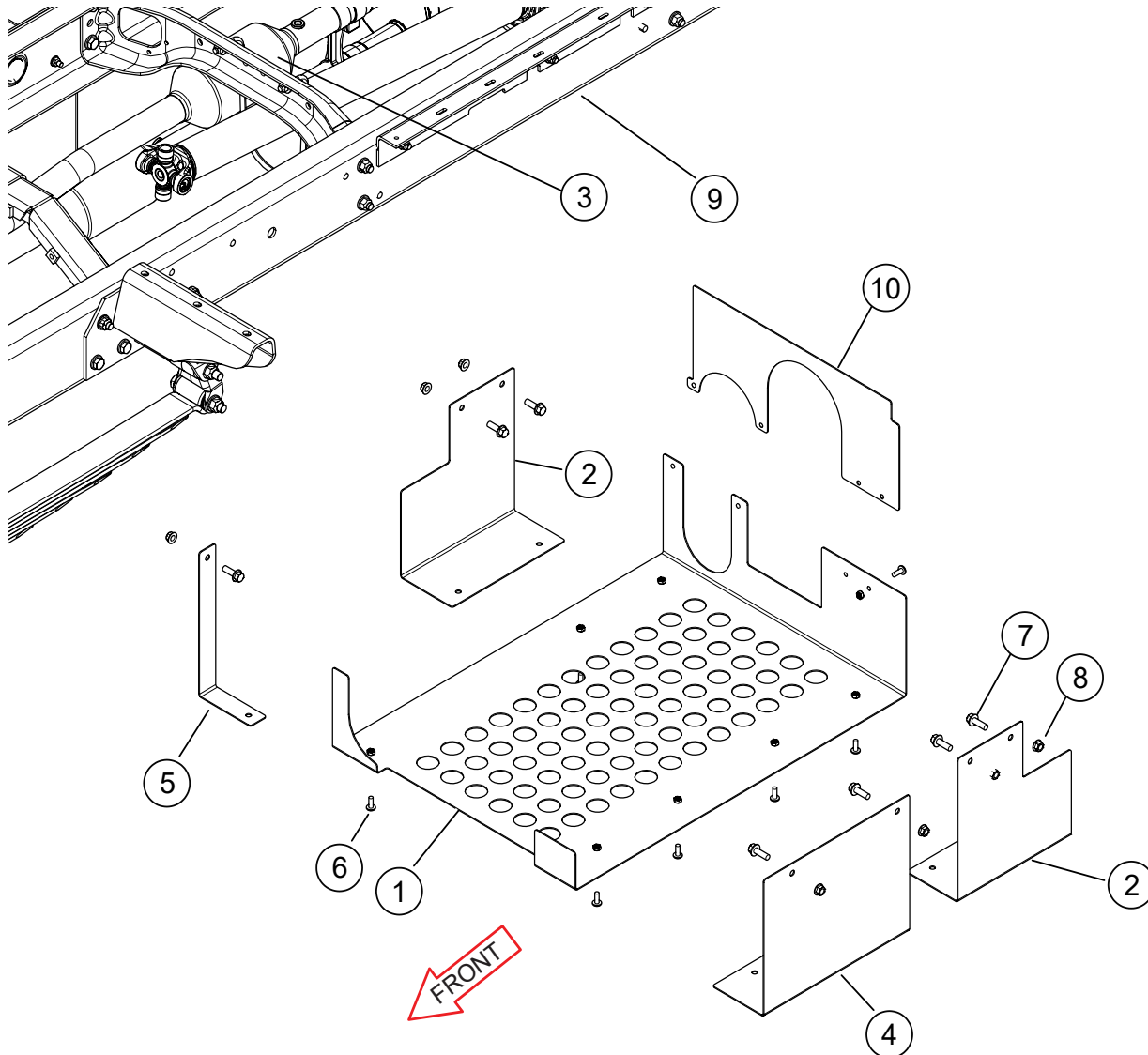


Subject: Catalytic converter protective covers.

Applies To: Aeromaster on model year 2020 or later Freightliner MT45 chassis equipped with a straight exhaust.



Overview of catalytic converter cover (Floor and sidewalls not shown for clarity)

BOM ID	Part Number	Description	Qty.
0	51233160SK	COVER CATALYTIC CONVERTER MT45	1
1	22829758	BOTTOM PLATE SS	1
2	22829755	BRACKET REAR CAT COVER SS	2
3	REFERENCE	CATALYTIC CONVERTER	
4	22829757	BRACKET CAT COVER FRONT LH SS	1
5	22829756	BRACKET CAT COVER FRONT RH SS	1
6	11602580	SCREW PIN-IN-HEX 3/8-16 X 1.00 SS	11
7	11600251	BOLT FLANGE 1/2-13 X 1.50 GR8 ZN	7
8	11600252	NUT FLANGE 1/2-13 PTLK GR8 ZN	7
9	REFERENCE	CHASSIS FRAME RAILS	
10	22830157	TOP PLATE	1
NS	03104479	DECAL SERVICED JOB CODE	1
NS	03102353-N002EN	CATALYTIC CONVERTER COVER MT45	1

Tools and Supplies Required:

In addition to standard shop tools this job also requires:

- Drill with drill stop
- 7/32" bit and 1/2" cone step drill bit
- Sockets and ratchet wrench including 3/4"
- Combination wrenches including 3/4"
- Tamper proof hex bit socket set
- Torque wrenches (with ft•lb increments)
- Liquid threadlocker, red and blue Permatex® or equivalent
- Rubberized undercoating spray, Rust-Oleum® or equivalent
- Wire ties

Procedure:

⚠ CAUTION

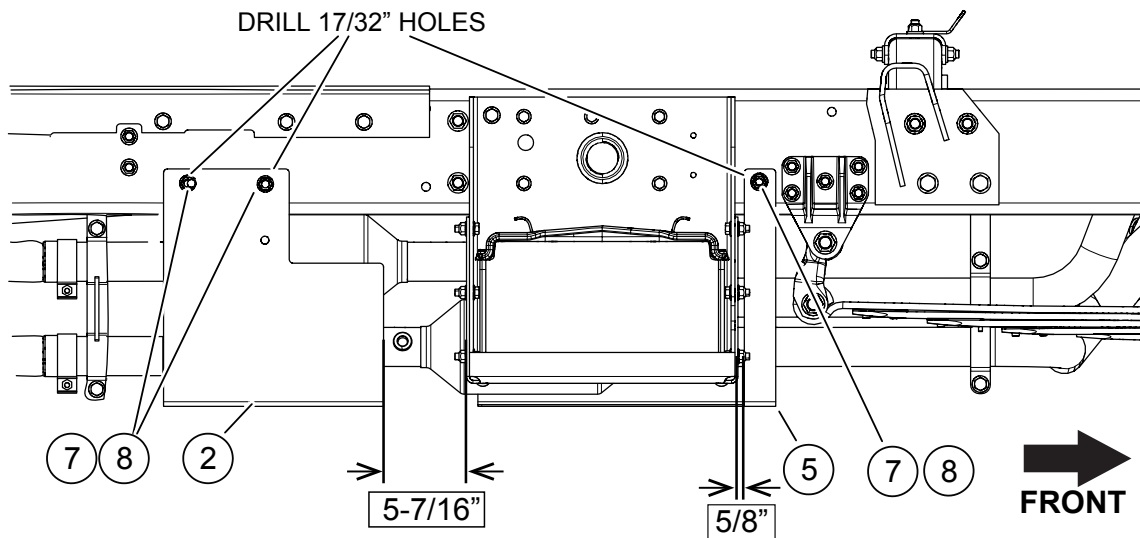
Always wear safety glasses and other proper protective equipment (gloves, hearing protection, etc.) as appropriate to the process.

Take every precaution to ensure proper clearance of drilling and tool clearance to avoid scuffing, nicking, or damaging any chassis components such as fuel lines, brake lines, wire harnesses, etc. Due to chassis manufacturer's variances, The Shyft Group cannot guarantee the exact locations of hole and component locations in all applications. Use these instructions as a guide. If not confident in performing this installation, STOP and contact Utilimaster Technical Support.

1. Read and understand all the instructions before use.
2. From underneath right side, align the RH front frame mount 5/8" forward of the battery box.
3. From inside the RH front chassis rail, note the proposed forward hole locations. Using wire ties, secure the brake lines tight around the plastic brake line holders just forward and rear of the propose hole locations. This will allow additional clearance for drilling 17/32" holes.

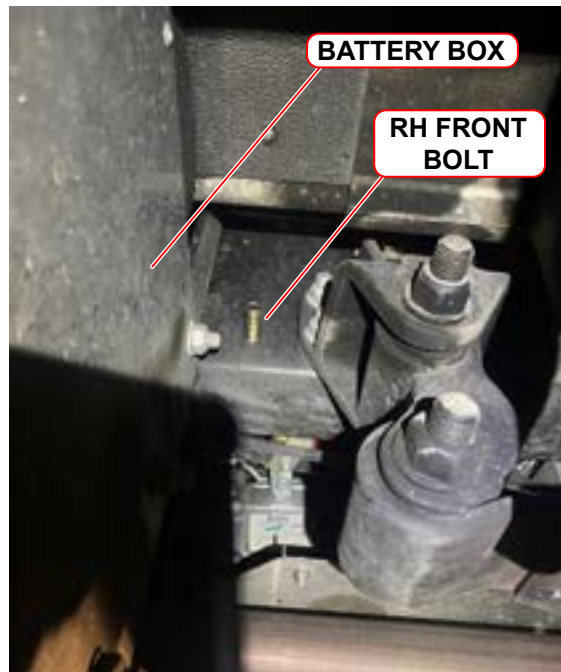


Zip tied brake lines



RH front and rear frame rail mounts

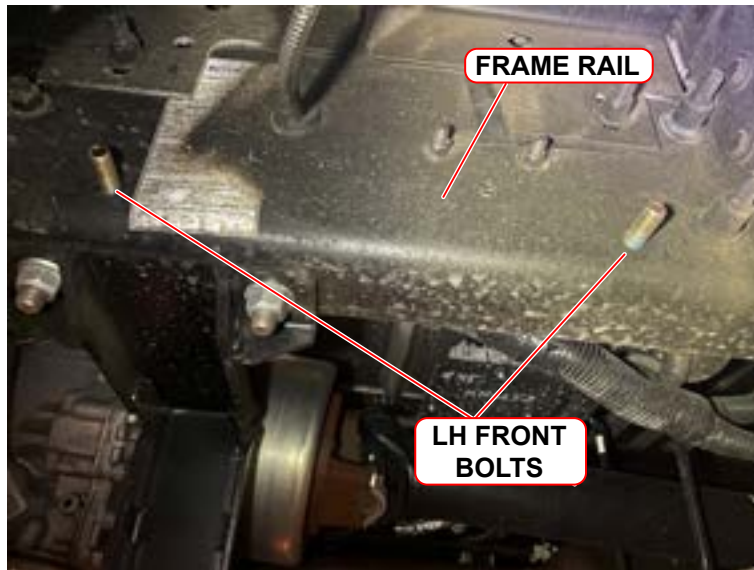
4. Use the hole in the RH forward frame mount as a template to mark the hole location.
5. From outside the frame rail, use a $7/32$ " bit with a drill stop to drill a pilot hole.
6. Use a $1/2$ " step bit to enlarge the pilot hole.



RH front frame fastener

7. Use 1/2-13 Align the LH front frame mount $5-7/8$ " from the back of the crossmember for the front hole.
8. Use the holes in the LH front mount bracket as a guide to mark (2) hole locations.
9. From outside the frame rail, use a $7/32$ " bit with a drill stop to drill (2) pilot holes.

10. Use a 1/2" step bit to enlarge the holes in the LH frame rail
11. Spray holes with undercoating.
12. Use only (2) 1/2-13 bolt and nut in the **front hole** locations to loosely secure the LH and RH front frame mounts.



LH front frame mount location

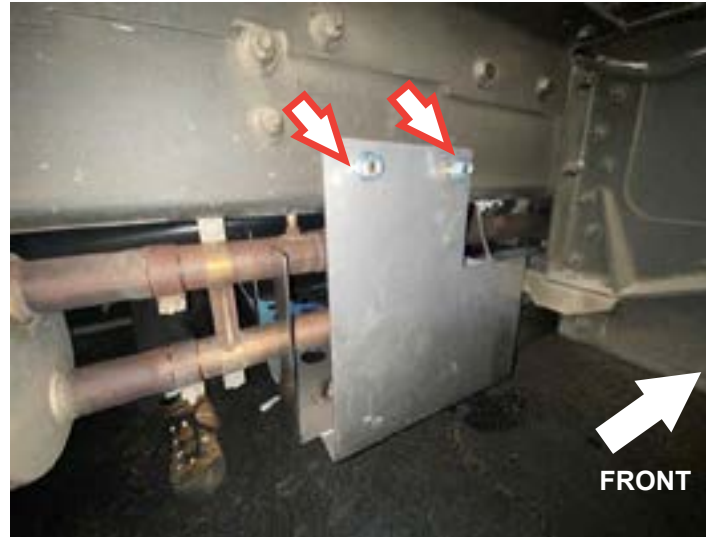
13. Secure rear frame mounts to the bottom plate with (4) 3/8-16 tamper-proof screws. Insert the bottom plate over the front frame mounts and secure with (3) 3/8-16 screws.



Forward tamper-proof screws

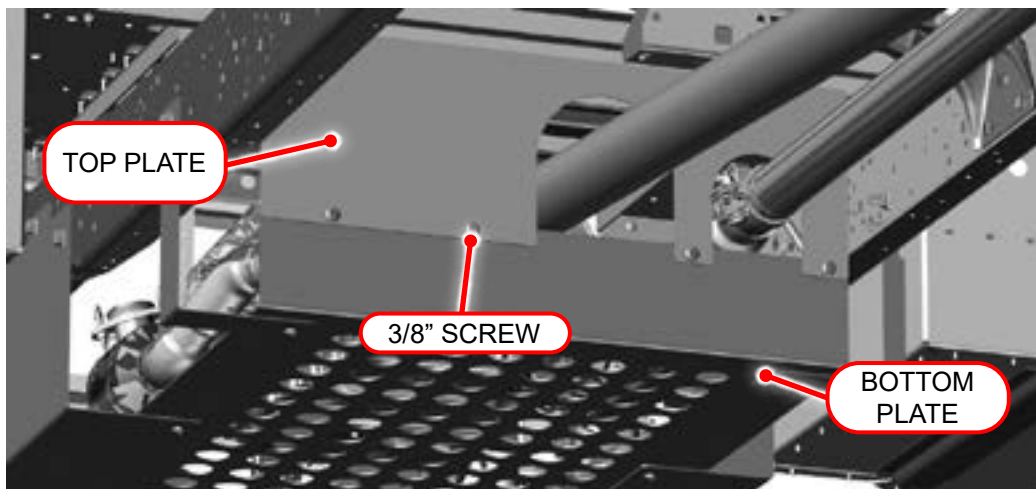
14. Lift the rear of the bottom plate until the bracket and bottom plate assembly is level and free of obstructions.
15. Mark the LH and RH rear hole locations.
16. From inside the RH chassis rail, note the proposed rear hole locations. Use wire ties, secure the brake lines tight around the plastic brake line holders just forward and rear of the propose hole locations. This will allow additional clearance for drilling 1/2" holes.

17. Use a 7/32" bit and a drill stop to drill (4) pilot holes for the LH and RH rear frame mounts.
18. Use a 1/2" cone step bit to enlarge remaining holes in the frame rail.
19. Spray holes with underbody coating.
20. Loosely install RH and LH rear frame mounts with (5) 1/2" bolts and nuts.



RH rear bracket fasteners

21. Remove each tamper-proof screw individually, apply RED threadlocker and reinstall.
22. Remove each 1/2" nut individually, apply BLUE threadlocker and reinstall.
23. Torque all 1/2" nuts to 65–95 ft•lb.



Installing top plate

24. Insert top plate horizontally above the driveshaft and exhaust pipe and rotate downward. Once clear of exhaust and driveshaft attach to bottom panel using (4) 3/8-16 hex screws and washers.
25. Torque (7) 1/2" nuts to 65–95 ft•lbs.
26. Tighten (8) 3/8" hex screws.

27. Use Job Code 33160 from this document to complete the SERVICED decal.

28. Adhere the decal to the passenger side bulkhead wall between the seat back and the door pocket.



Service decal location

Contact Utilimaster for Technical Service

Email: FVSTechSupport@Utilimaster.com

Phone: 800-237-7806

Mail or Express Service:

Fax: 574-848-2800

Utilimaster

Attn: Technical Support Department

603 Earthway Blvd.

Bristol, IN 46507 USA

This material is confidential and the property of The Shyft Group, Inc. (Shyft) It is shared with your company for the sole purpose of helping you with the operation of the described equipment. Shyft makes no warranty of any kind with regard to this material, including, but not limited to, the implied warranties of merchantability and fitness for a particular purpose. Shyft shall not be liable for errors contained herein or for incidental or consequential damages in connection with the furnishing, performance, or use of this material. Shyft expressly disclaims all responsibility and liability for the installation, use, performance, maintenance, and support of third-party products. Customers are advised to make their independent evaluation of such products. No part of this document may be photocopied, reproduced, or translated to another language without the prior written consent. All products or name brands mentioned in this document are trademarks of their respective owners.